



Bigger than eight-bedroom House

2 940 m², Land 24 839 m² Nowe Warpno, Poland

Price upon request



Layout
**Bigger than
eight-bedroom**

Area
2940 m²

Land
23590 m²

Terrace
20 m²

Parking
23x outside

This historic palace is not only a tribute to the craftsmanship and architecture of a bygone era, but also the epitome of elegance and grandeur. Its imposing structure and detailed features provide a glimpse into the past and recall an era when the emphasis in house building was on artistic value and aesthetics. The palace is surrounded by extensive forests that ensure peace and privacy, away from any residential areas. Its unique location on a 24,840 m² plot of land right in the pristine bay of the Polish Baltic Sea adds even more exclusivity and charm to this majestic estate.

The mansion offers magnificent panoramas from outside and inside. Richly decorated ceilings and walls with original details add a touch of history and character to the property. The spacious rooms are filled with natural light and offer luxurious amenities. A majestic garden with forest and sea views, stylish furnishings and an adjoining outbuilding complete this exceptional property.

Built in 1908, the palace consists of four floors of almost 1,500 m²: basement, mezzanine, first floor and second floor. The mezzanine, which is the most

Built-up area	1250 m ²
Floor area	2940 m ²
Land	23590 m ²
Terrace	20 m ²
Parking	23x outside
Building energy rating	G

Bigger than eight-bedroom House

2 940 m², Land 24 839 m² Nowe Warpno, Poland

Price upon request



prestigious part of the building, contains historic furniture, mostly in the Biedermeier and Empire style of the 19th century; paintings, tapestries and other decorations date from the 18th and 19th centuries. This part also features a parquet floor with the famous Versailles pattern with intersecting diagonals. On the first floor there are four exclusive suites, including the master suite overlooking the sea bay, which consists of a living room, bedroom and bathroom. On the second floor there are six bedrooms (with en-suite bathrooms) for guests. The basement can be used for guest accommodation. Here there is a kitchen, pantry, laundry room, sauna, wine cellar, four common rooms and five toilets.

The building next door, built in 1908, is designed in the same architectural aesthetic as the chateau and covers an area of 560 m². The upper floor of this annex houses seven bedrooms with en-suite bathrooms and a kitchen, providing perfect privacy and comfort for its inhabitants. On the ground floor of this building there are two apartments for staff, a garage, a workshop and a room for technical equipment. In addition, there are two rooms dedicated to the boiler and heating system, which use wood pellets as a source of energy.

Permission has been granted for the construction of another building on the site.

Do not hesitate to contact us regarding your wishes. We have hundreds of foreign properties available and are ready to be your support in finding the right property.

VÁŠ MAKLÉR



Nicolas Peknik

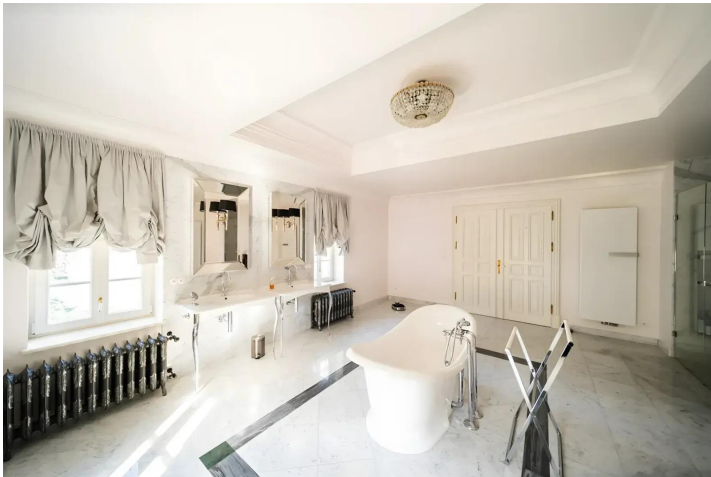
+420 602 544 858

info@philip-frank.com

Bigger than eight-bedroom House

2 940 m², Land 24 839 m² Nowe Warpno, Poland

Price upon request



Bigger than eight-bedroom House

2 940 m², Land 24 839 m² Nowe Warpno, Poland

Price upon request

