



Apartment Two bedroom

63 m² Praha 10, Na spojce

500 900 €



Layout
Two bedroom

Area
62.5 m²

We offer you attractive apartments for immediate move-in, located in a corner Art Nouveau building with decorative facades that underwent a complete and sensitive renovation in 2023. The apartments feature clean lines, generous space, and sophisticated design that emphasize comfort and practicality of living. You can choose from a wide range of apartments with layouts from 1+kk to 4+kk across eight floors.

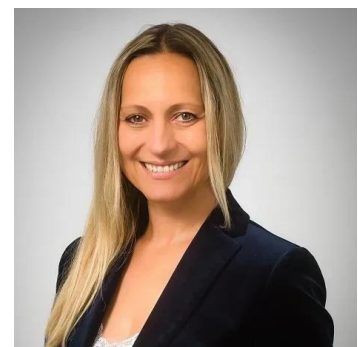
This elegant 3+kk apartment is located on the first floor above ground and will impress you with its bright hallway, spacious living area with a kitchenette, peaceful bedroom, children's room or study, timeless bathroom, and separate toilet. The apartment comes with a cellar space. The standards include carefully selected materials - wooden floors, wall tiles imitating marble and stone, tall ceilings, ceramic bathroom fixtures, wooden or full-glass interior doors, and air conditioning.

Vršovice used to be an ancient village but today is among the most sought-after Prague locations. The area offers pleasant restaurants, bistros, and cafés, numerous schools and kindergartens, medical offices, authorities, shops, the Eden shopping center, the impressive Grébovka park, or the popular Havlíčkovy Gardens, which are among the few preserved Prague vineyards. A pleasant walk can take you to Jiřího z Poděbrad Square, where farmer markets are regularly held. Surrounded by the unobtrusive elegance of one of Prague's most beloved neighborhoods, this residence will enchant you by merging the charm of the past with the comfort of modern life in the wider center of Prague. Come and choose.

The apartments are offered unfurnished; if interested, they can be equipped with a kitchen unit and built-in wardrobes for an additional charge.

Price	500 900 €
Floor area	62.5 m ²
Cellar	2 m ²
Floor	1
Elevator	Ano
Building energy rating	D

VÁŠ MAKLEŘ



Petra Harrison

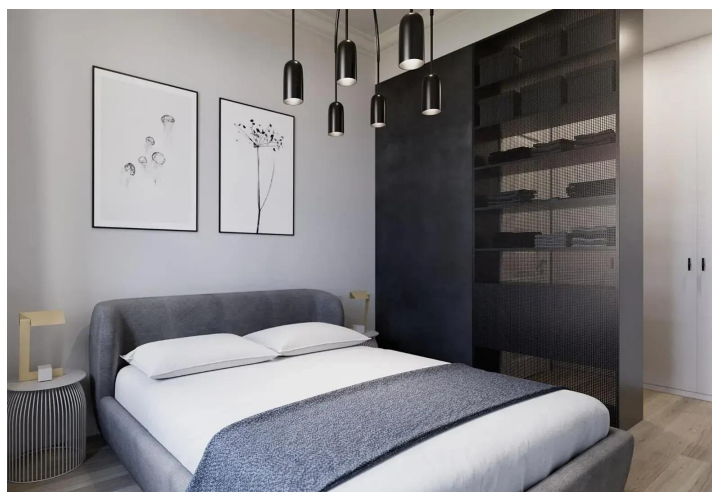
+420 602 544 858

info@philip-frank.com

Apartment Two bedroom

63 m² Praha 10, Na spojce

500 900 €



Řez domem
Pozice domu v rámci domu



Podlaha podlaží
Umístění bytu na půdole

BYTOVÁ JEDNOTKA

1E 3+KK

1.NP 62,5 M²

1E.01	CHODBA	4,1 m ²
1E.02	WC	1,9 m ²
1E.03	KOUPELNA	3,7 m ²
1E.04	OBIVACÍ POKOJ S KUCH. KOUT.	20,8 m ²
1E.05	LŮŽNICE	10,2 m ²
1E.06	POKOJ	10,9 m ²
SMĚLE KONSTRUKCE		3,5 m ²
PODLAŽNÍ PLOCHA		60,6 m ²
0.0E	SKLEP	1,9 m ²
PLOCHA CELKEM		62,5 m ²

Podlažní plocha bytu dle valdění území č. 360/2013 Sb. znamená celkovou plochu včetně balkonů, teras, a také plochy pro umístění výtahové šachty, průchodů a jiných částí společného zájmu, které jsou nezbytné pro užívání bytu. Plochy zahrnuté v této ploše nejsou výtahová šachta, průchod a jiné části společného zájmu, které jsou nezbytné pro užívání bytu. Plochy zahrnuté v této ploše nejsou výtahová šachta, průchod a jiné části společného zájmu, které jsou nezbytné pro užívání bytu.

